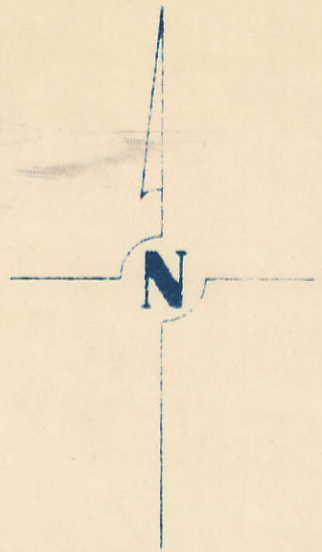


SECTION 33
TOWNSHIP 80 NORTH, RANGE 2 EAST,
5TH PRINCIPAL MERIDIAN
ALLENS GROVE TOWNSHIP
SCOTT COUNTY, IOWA

TRANSFER PAGE 28



SCALE: 1 INCH = 330 FEET

SECTION 28

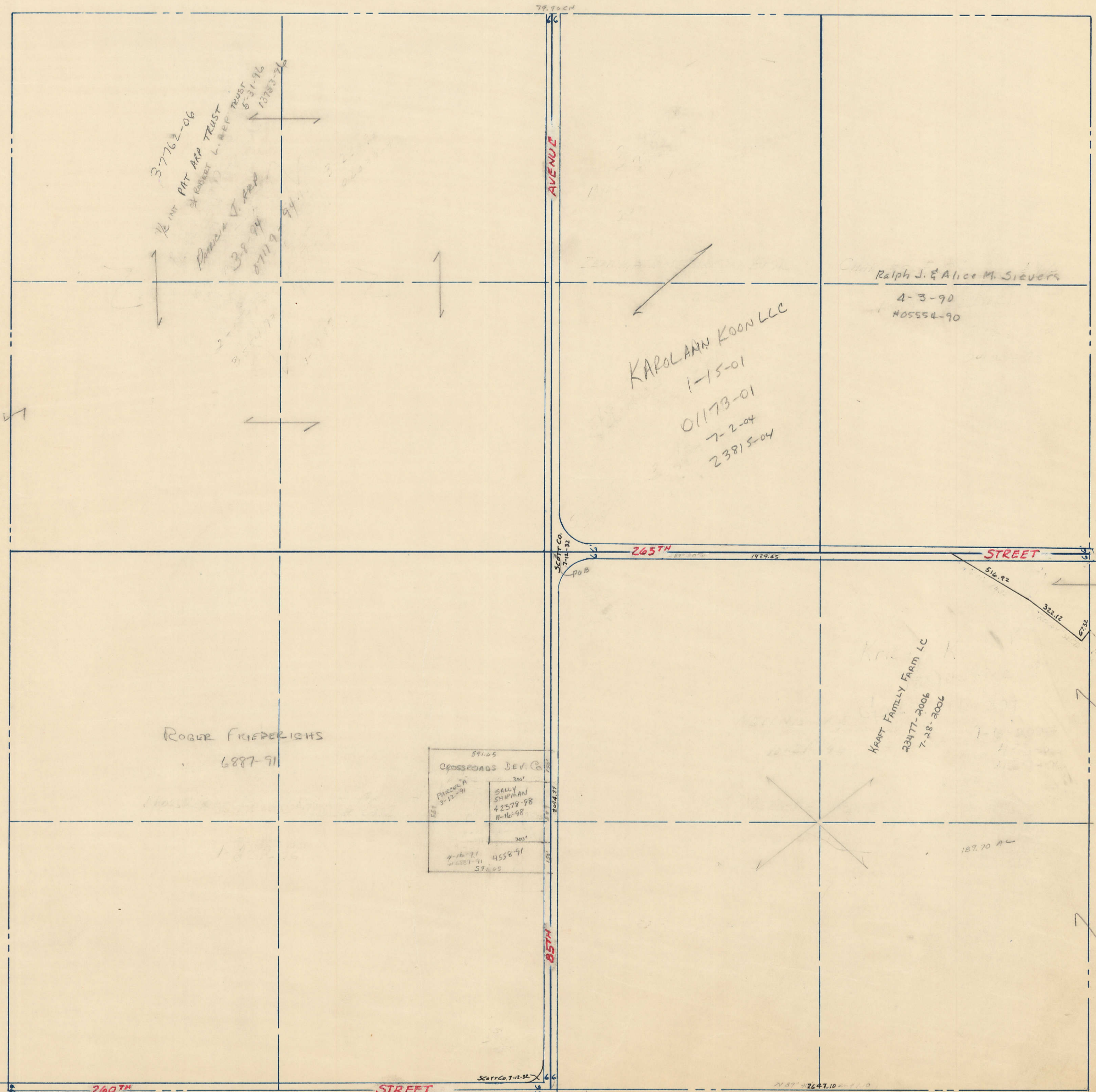
PAGE 28

PAGE 32

SECTION 32

PAGE 34

SECTION 34



SECTION 4

PAGE HICKORY GROVE TWP.